

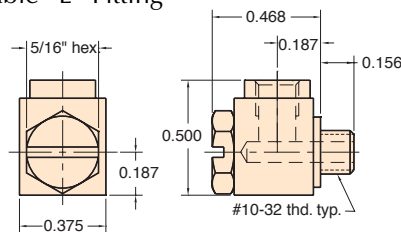


MINIMATIC® X T L FITTINGS

15002-1



Adjustable "L" Fitting



Material: Brass body, stainless steel stud

Stud: Stainless steel hex head with screwdriver slot (12292)

Thread: #10-32

Seals: Buna-N o-ring furnished

Use: Permits port to be aimed 360° in one plane, then secured by tightening screw. Also useful in connecting and disconnecting hose in hard-to-reach locations.

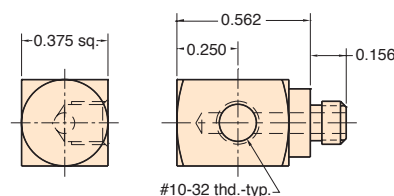
Options: (-ENP)



15002-2



"L" Fitting



Material: Brass

Thread: #10-32

Gasket: Buna-N furnished in package only

Use: Allows ports to be brought out 90° to the side. For exact positioning use thread sealant

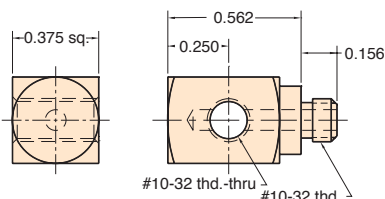
Options: (-ENP)



15002-3



"T" Fitting



Material: Brass

Thread: #10-32

Gasket: Buna-N furnished in package only

Use: Like the "L" fitting, except ports out both sides. For precise positioning use thread sealant

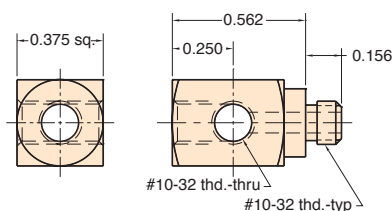
Options: (-ENP)



15002-4



"X" Fitting



Material: Brass

Thread: #10-32

Gasket: Buna-N furnished in package only

Use: May be used as a miniature manifold, or "L" or "T" fitting by plugging unused ports with screw plug 11755. For precise positioning use thread sealant

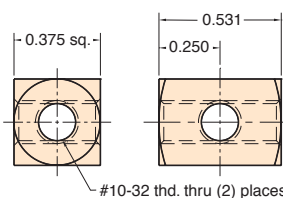
Options: (-ENP)



15002-5



"X" Coupling



Material: Brass

Thread: #10-32

Use: Ideal as small manifold.

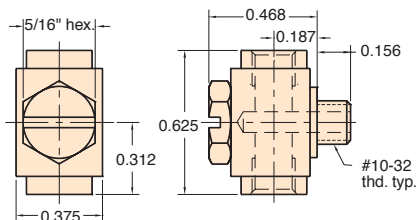
Options: (-ENP)



15002-6



Adjustable "T" Fitting



Material: Brass

Thread: #10-32

Stud: Stainless steel hex head with screwdriver slot (12292)

Seals: Buna-N o-ring furnished

Use: Permits ports to be aimed in any direction 360° in one plane then secured by tightening screw. Also useful for connecting or disconnecting hose in tight spots.

Note: Same dimensions as 15002-1 "L" fitting, except length, which is 5/8"

Options: (-ENP)

